

GO GREECE

DEVELOPMENT & INVESTMENTS

G CLUB



GO GREECE
Development & Investments

WELCOME TO THE WORLD OF **GO GREECE**

DESIGN DEVELOP DELIVER

THE PROJECT



◆ GAZI



G club



Sizes

1 Bedroom

1st-A 1st-B 2nd-A 2nd-B
3rd-A 3rd-B 4th-A 4th-B

Studios

GF-A 1st-C 2nd-C 3rd-C
5th-A 5th-B 6th-A 6th-B



Location

Falaisias 6, Athina 118 55,
Greece



Category

New Construction



Availability

16 Apartments

PERSPECTIVES

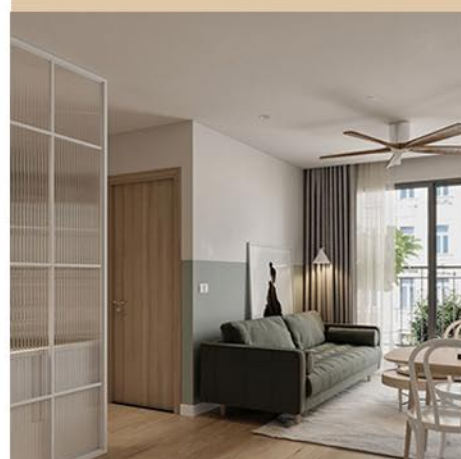
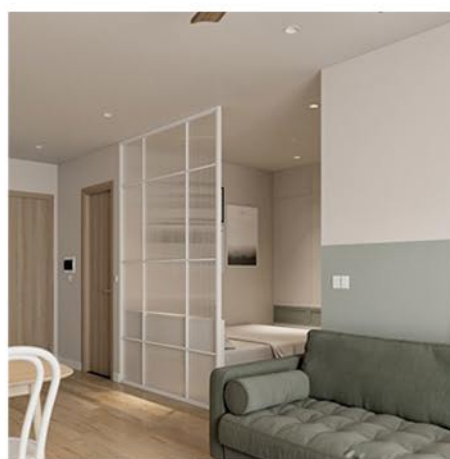






LIFESTYLE





AREA PERKS



Cultural Hub

Gazi is renowned for its cultural scene and vibrant nightlife. The area is filled with numerous bars, clubs, live music venues, and restaurants that cater to various tastes and preferences.

Dining and Entertainment

The streets of Gazi are lined with a wide array of eateries, ranging from traditional Greek taverns to international cuisine restaurants. Visitors can enjoy delicious meals, experience the local gastronomy, and indulge in a diverse culinary scene.

Nightlife

Gazi is famous for its vibrant nightlife, offering a multitude of options for entertainment. From trendy bars with unique themes to popular nightclubs, the neighborhood comes alive after dark and attracts both locals and tourists.

Street Art

Gazi is known for its vibrant street art scene, with colorful murals and graffiti adorning the walls of buildings. This adds to the artistic ambiance and provides a visually appealing backdrop for strolling around the neighborhood.

Proximity to Attractions

Gazi is conveniently located near other major attractions in Athens, such as the Acropolis, Monastiraki Square, and Plaka. Its central location allows for easy access to historical sites, shopping areas, and cultural landmarks.

Hospitals

Gazi is located in close proximity to several hospitals and medical facilities. Nearby hospitals include:

- Metropolitan Hospital (approximately 2.5 kilometers away)
- Evangelismos General Hospital (approximately 3 kilometers away)
- KAT General Hospital (approximately 8 kilometers away)



Pharmacies

There are numerous pharmacies situated within and around the Gazi neighborhood. You can easily find pharmacies within a short walking distance, ensuring access to essential medications and healthcare products.

Parking Spaces

Gazi offers various options for parking, including street parking and nearby parking lots. While street parking might be available, it's advisable to check for designated parking areas or nearby parking facilities to ensure a hassle-free parking experience.

Transportation

Gazi benefits from excellent transportation links, including access to buses, taxis, and the Athens Metro. The Kerameikos Metro Station is located within the neighborhood, providing convenient connectivity to other parts of Athens.

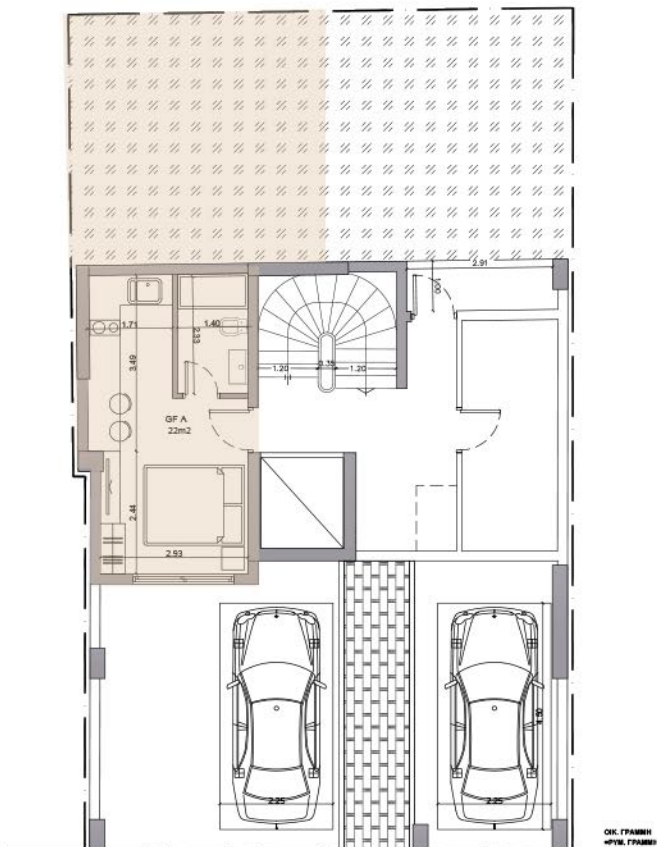
Parks and Green Spaces

While Gazi is more known for its urban atmosphere, it is close to some parks and green spaces where residents and visitors can enjoy outdoor activities. For example, the Technopolis Park, adjacent to the Technopolis cultural center, provides a green oasis amidst the urban landscape.



FLOOR PLANS





OK, FRAMER
OK, FRAMER



Type
Studio



Level
Ground Floor



Area
22 m² + 25 m² Garden



-

GF-A

* Floor plans depicted in this brochure are preliminary and subject to variation. Final floor plans, along with accurate dimensions, will be issued following the completion of necessary permitting processes.

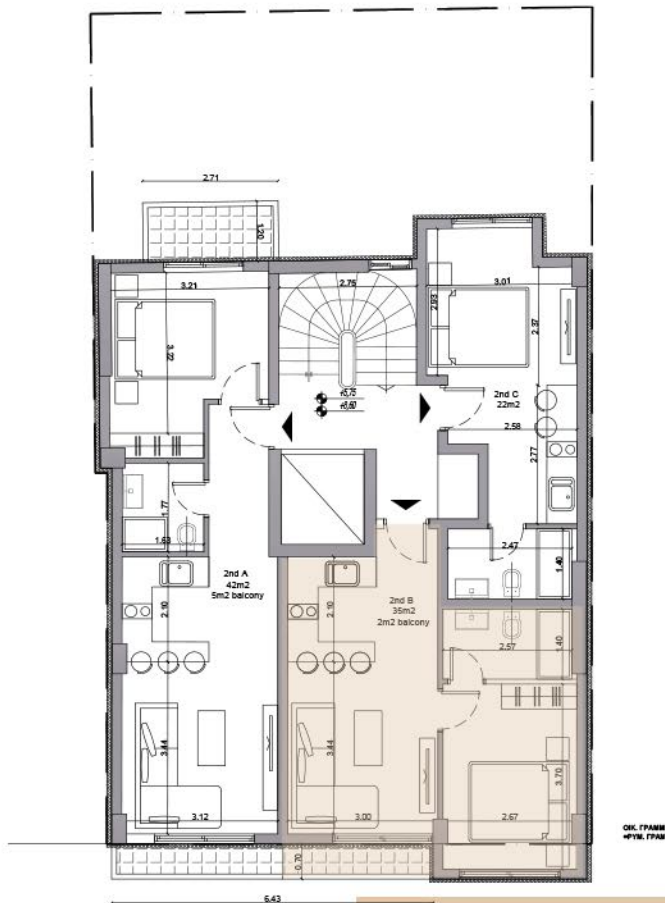


Level

Area

1000

* Floor plans depicted in this brochure are preliminary and subject to variation. Final floor plans, along with accurate dimensions, will be issued following the completion of necessary permitting processes.



Type
1 Bedroom



Level
First Second Third Floor



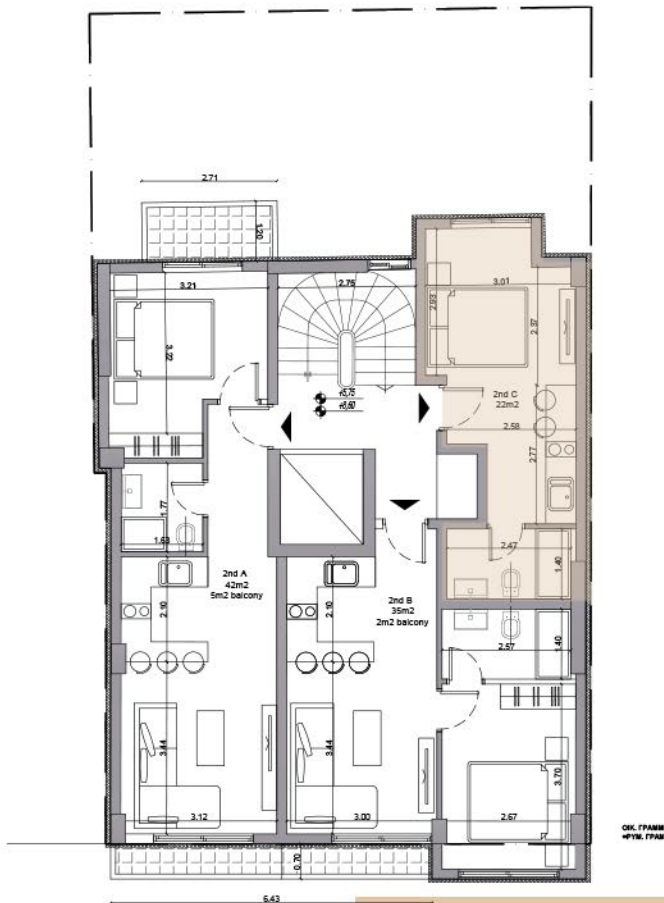
Area
35 m² + 2 m² Balcony



-

1st-2nd-3rd-B

* Floor plans depicted in this brochure are preliminary and subject to variation. Final floor plans, along with accurate dimensions, will be issued following the completion of necessary permitting processes.



Type
Studio



Level
First Second Third Floor



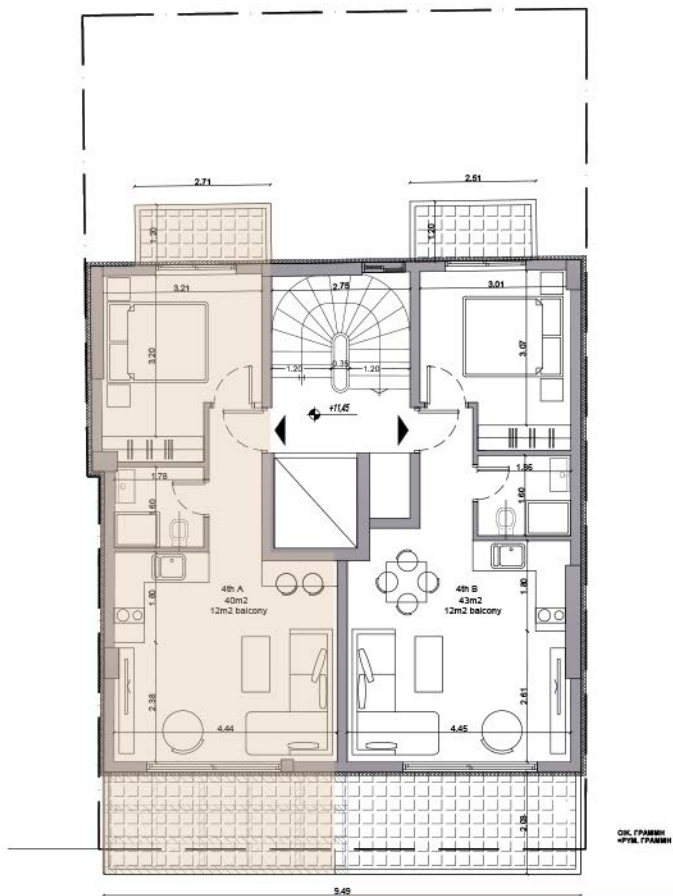
Area
22 m²



-

1st-2nd-3rd-C

* Floor plans depicted in this brochure are preliminary and subject to variation. Final floor plans, along with accurate dimensions, will be issued following the completion of necessary permitting processes.



Type
1 Bedroom



Level
Fourth Floor



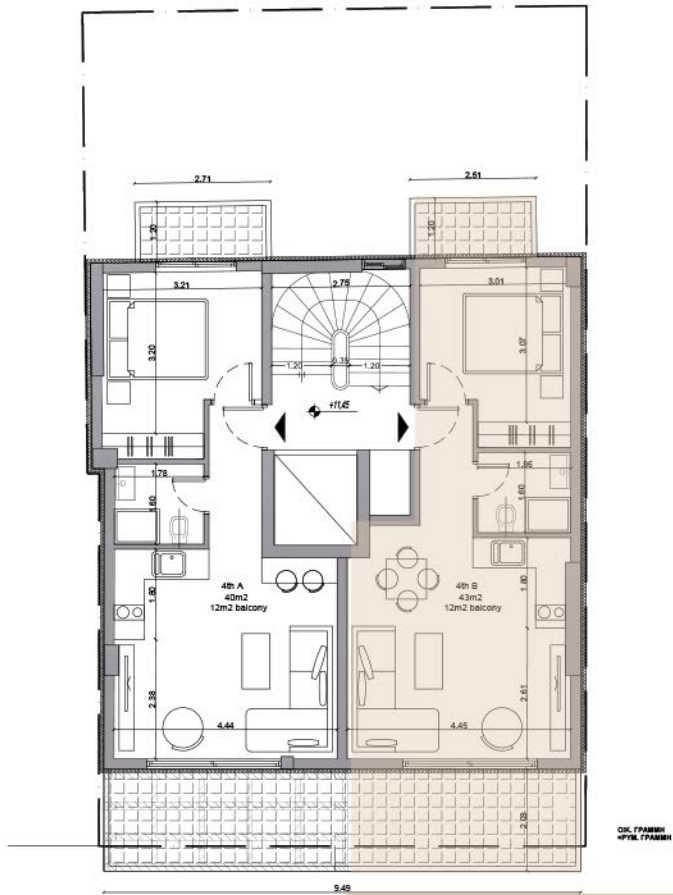
Area
40 m² + 12 m² Balcony



-

4th-A

* Floor plans depicted in this brochure are preliminary and subject to variation. Final floor plans, along with accurate dimensions, will be issued following the completion of necessary permitting processes.



Type
1 Bedroom



Level
Fourth Floor



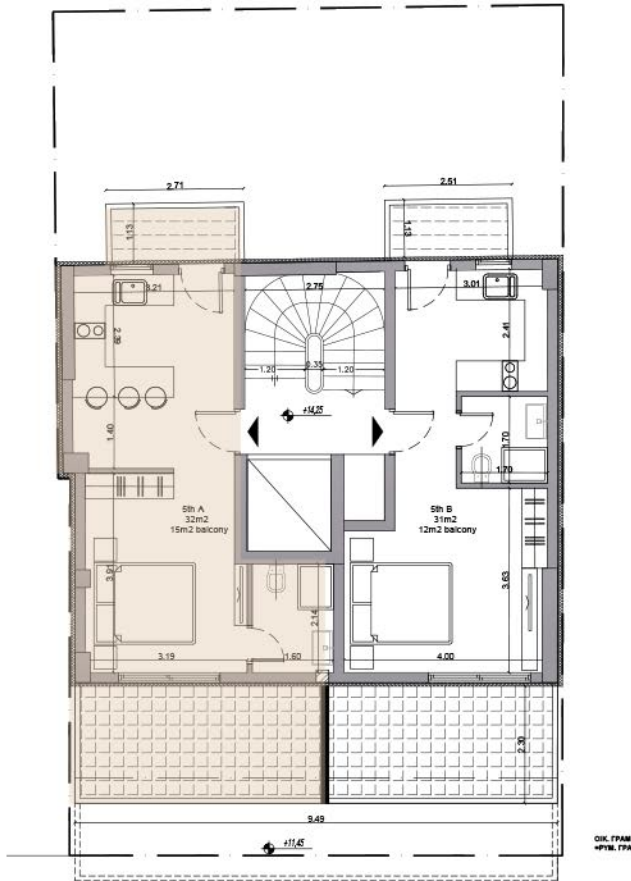
Area
43 m² + 12 m² Balcony



-

4th-B

* Floor plans depicted in this brochure are preliminary and subject to variation. Final floor plans, along with accurate dimensions, will be issued following the completion of necessary permitting processes.



OK, FRAM
#P16, FPA



Type
Studio



Level
Fifth Floor



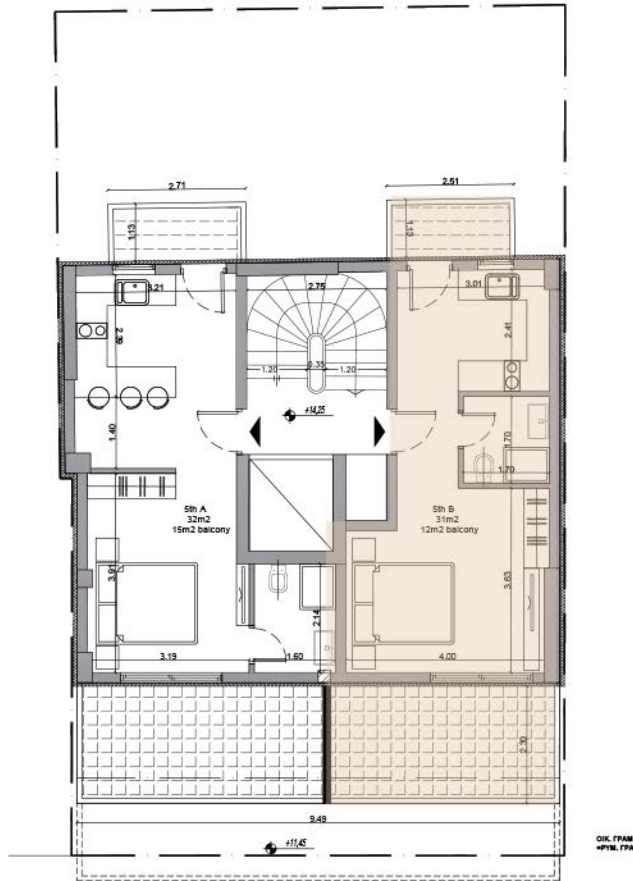
Area
32 m² + 15 m² Balcony



-

5th-A

* Floor plans depicted in this brochure are preliminary and subject to variation. Final floor plans, along with accurate dimensions, will be issued following the completion of necessary permitting processes.



Type
Studio



Level
Fifth Floor



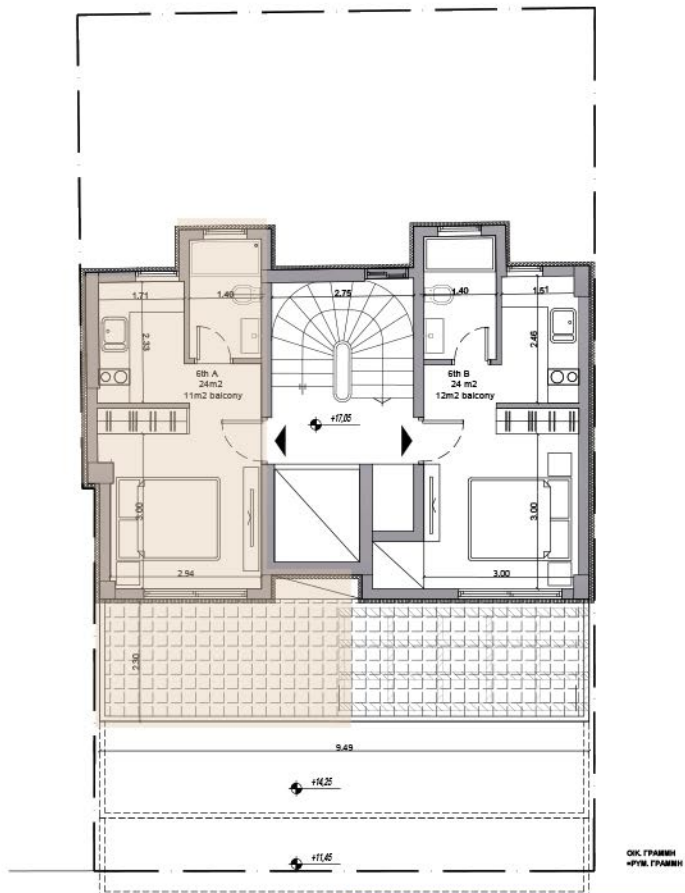
Area
31 m² + 12 m² Balcony



-

5th-B

* Floor plans depicted in this brochure are preliminary and subject to variation. Final floor plans, along with accurate dimensions, will be issued following the completion of necessary permitting processes.



Type
Studio



Level
Sixth Floor



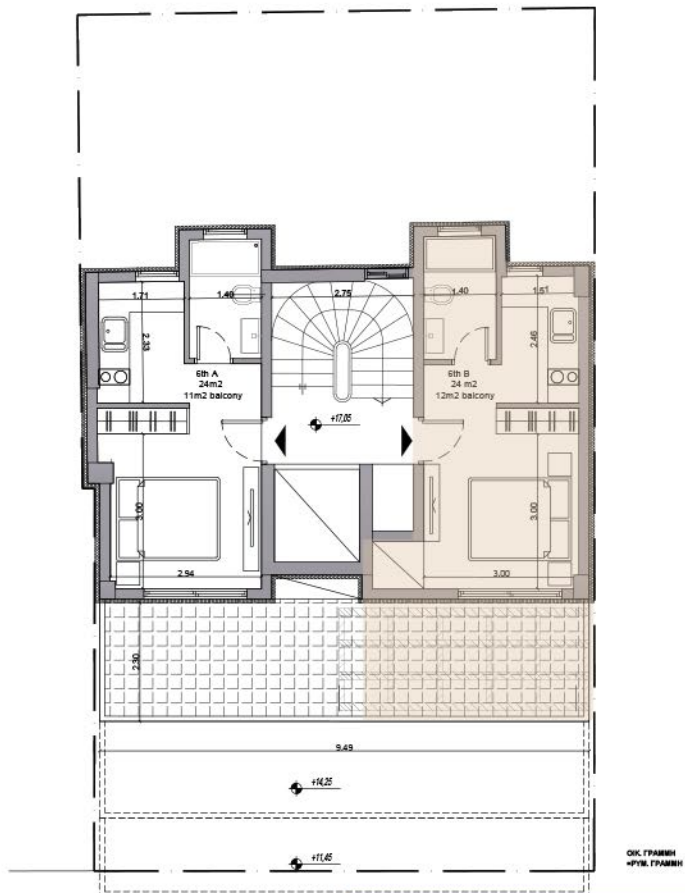
Area
24 m² + 11 m² Balcony



-

6th-A

* Floor plans depicted in this brochure are preliminary and subject to variation. Final floor plans, along with accurate dimensions, will be issued following the completion of necessary permitting processes.



Type
Studio



Level
Sixth Floor



Area
24 m² + 12 m² Balcony



-

6th-B

* Floor plans depicted in this brochure are preliminary and subject to variation. Final floor plans, along with accurate dimensions, will be issued following the completion of necessary permitting processes.

OUR OFFICES



GRC	Greece +30 698 204 3755
LBN	Lebanon +961 76 78 78 70
UAE	United Arab Emirates +971 5888 19374
IRQ	Iraq +964 770 977 6767
UK	United Kingdom +44 7990 816230
KWT	Kuwait +965 9945 5787
NGA	Nigeria +234 906 000 8306
AUS	Australia +61 421 012 345
KSA	Saudi Arabia +966 54 688 8222

 Go Greece Real Estate
 GoGreece_RealEstate
 www.gogreecerealestate.com