

GO GREECE

DEVELOPMENT & INVESTMENTS

G35

GO GREECE
Development & Investments

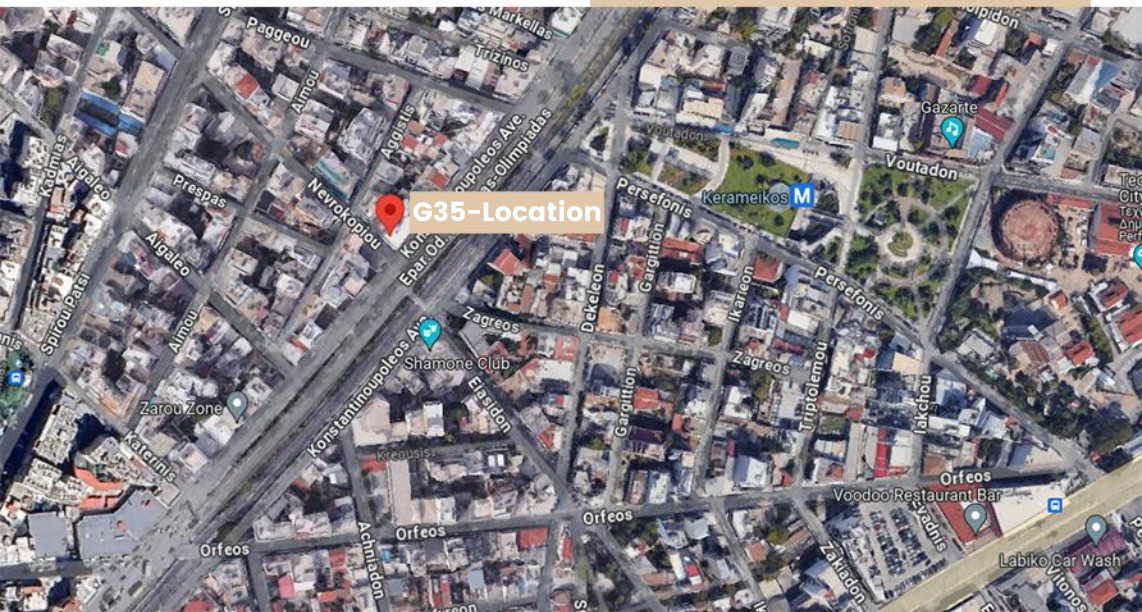
WELCOME TO THE WORLD OF **GO GREECE**

DESIGN DEVELOP DELIVER

THE PROJECT



◆ GAZI



G35



Sizes

1 Bedroom

1st-D 2nd-D 3rd-D 4th-D

Studios

1st-A 1st-B 1st-C 2nd-A
2nd-B 2nd-C 3rd-A
3rd-B 3rd-C 4th-A 4th-B
4th-C Loft-A Loft-C

2 Bedrooms

Loft-B



Location

Nevrokopioyi 2, Athina 118
55, Greece



Category

New Construction



Availability

19 Apartments

PERSPECTIVES

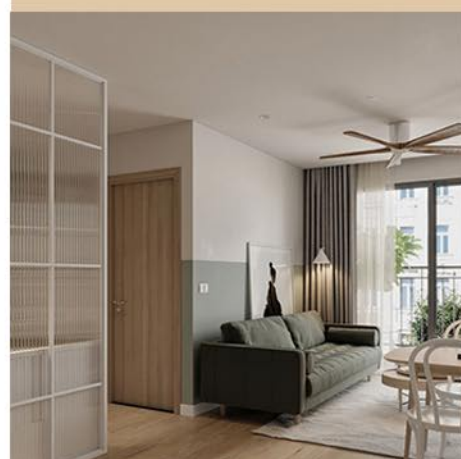
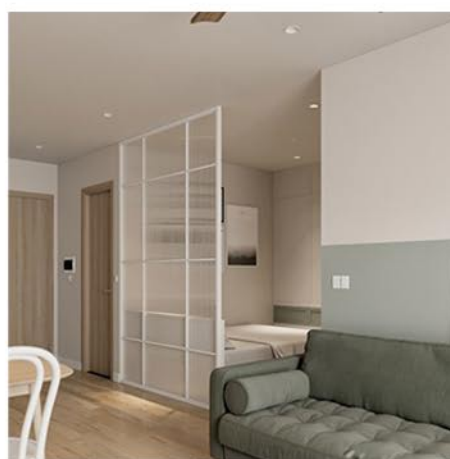






LIFESTYLE





AREA PERKS



Cultural Hub

Gazi is renowned for its cultural scene and vibrant nightlife. The area is filled with numerous bars, clubs, live music venues, and restaurants that cater to various tastes and preferences.

Dining and Entertainment

The streets of Gazi are lined with a wide array of eateries, ranging from traditional Greek taverns to international cuisine restaurants. Visitors can enjoy delicious meals, experience the local gastronomy, and indulge in a diverse culinary scene.

Nightlife

Gazi is famous for its vibrant nightlife, offering a multitude of options for entertainment. From trendy bars with unique themes to popular nightclubs, the neighborhood comes alive after dark and attracts both locals and tourists.

Street Art

Gazi is known for its vibrant street art scene, with colorful murals and graffiti adorning the walls of buildings. This adds to the artistic ambiance and provides a visually appealing backdrop for strolling around the neighborhood.

Proximity to Attractions

Gazi is conveniently located near other major attractions in Athens, such as the Acropolis, Monastiraki Square, and Plaka. Its central location allows for easy access to historical sites, shopping areas, and cultural landmarks.

Hospitals

Gazi is located in close proximity to several hospitals and medical facilities. Nearby hospitals include:

- Metropolitan Hospital (approximately 2.5 kilometers away)
- Evangelismos General Hospital (approximately 3 kilometers away)
- KAT General Hospital (approximately 8 kilometers away)



Pharmacies

There are numerous pharmacies situated within and around the Gazi neighborhood. You can easily find pharmacies within a short walking distance, ensuring access to essential medications and healthcare products.

Parking Spaces

Gazi offers various options for parking, including street parking and nearby parking lots. While street parking might be available, it's advisable to check for designated parking areas or nearby parking facilities to ensure a hassle-free parking experience.

Transportation

Gazi benefits from excellent transportation links, including access to buses, taxis, and the Athens Metro. The Kerameikos Metro Station is located within the neighborhood, providing convenient connectivity to other parts of Athens.

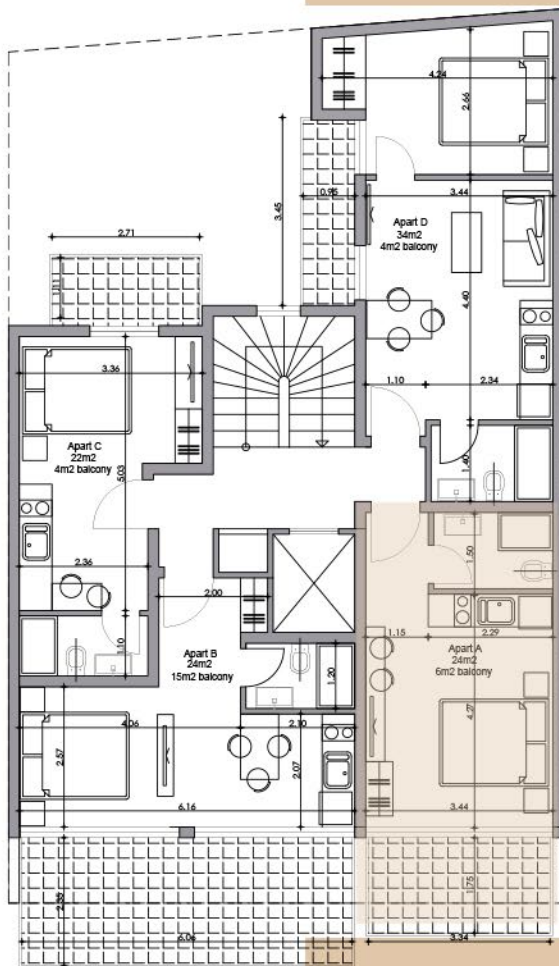
Parks and Green Spaces

While Gazi is more known for its urban atmosphere, it is close to some parks and green spaces where residents and visitors can enjoy outdoor activities. For example, the Technopolis Park, adjacent to the Technopolis cultural center, provides a green oasis amidst the urban landscape.



FLOOR PLANS





Type
Studio



Level
First Second Third Fourth
Floor



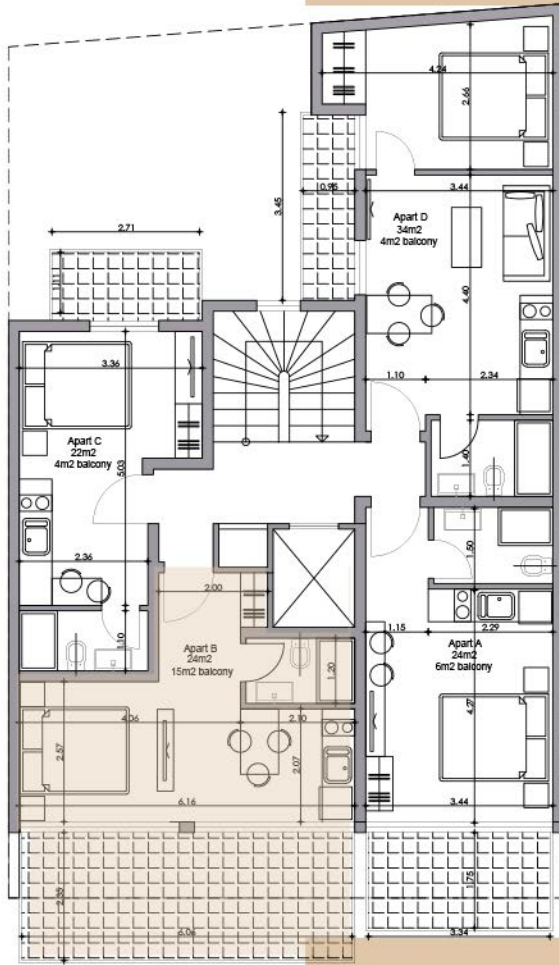
Area
24 m² + 6 m² Balcony



-

1st-2nd-3rd-4th A

* Floor plans depicted in this brochure are preliminary and subject to variation. Final floor plans, along with accurate dimensions, will be issued following the completion of necessary permitting processes.



Type
Studio



Level
First Second Third Fourth
Floor



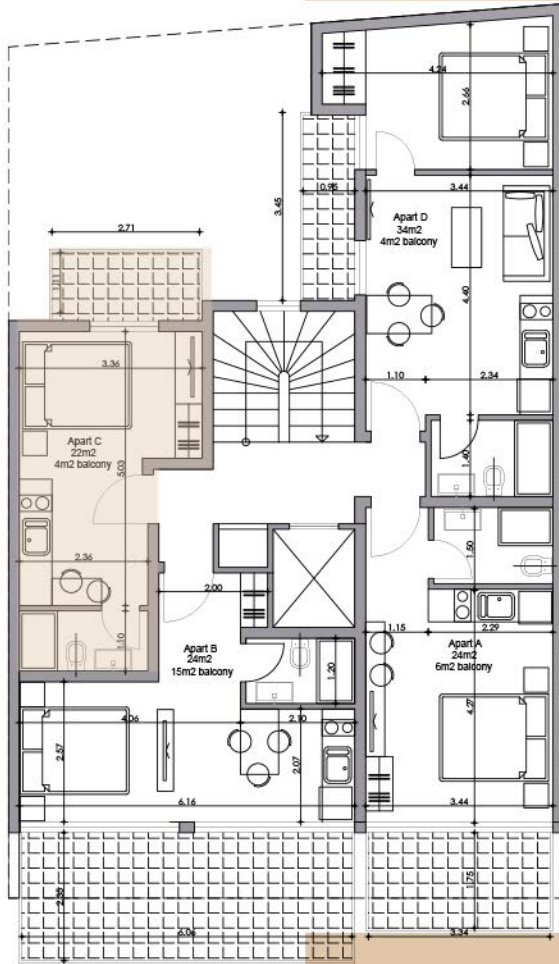
Area
24 m² + 15 m² Balcony



-

1st-2nd-3rd-4th B

* Floor plans depicted in this brochure are preliminary and subject to variation. Final floor plans, along with accurate dimensions, will be issued following the completion of necessary permitting processes.



Type
Studio



Level
First Second Third Fourth
Floor



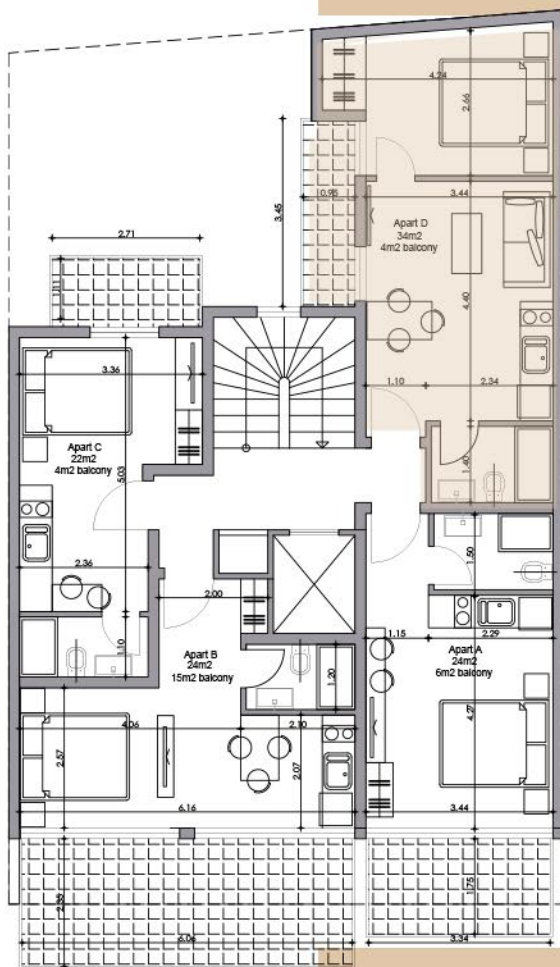
Area
22 m² + 4 m² Balcony



-

1st-2nd-3rd-4th C

* Floor plans depicted in this brochure are preliminary and subject to variation. Final floor plans, along with accurate dimensions, will be issued following the completion of necessary permitting processes.



Type
 1 Bedroom

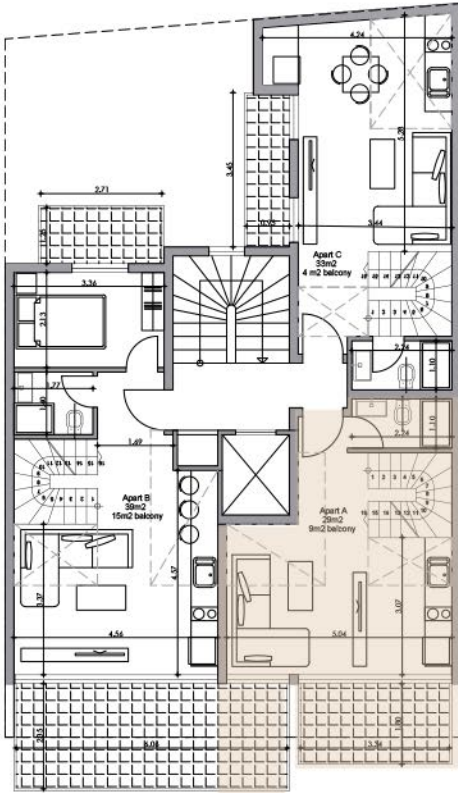
Level
 First Second Third Fourth Floor

Area
 34 m² + 4 m² Balcony

P -

1st-2nd-3rd-4th D

* Floor plans depicted in this brochure are preliminary and subject to variation. Final floor plans, along with accurate dimensions, will be issued following the completion of necessary permitting processes.



5th Floor-Loft A

29 m² + 9 m² Balcony



Type

1 Bedroom



Level

Fifth Sixth Floor

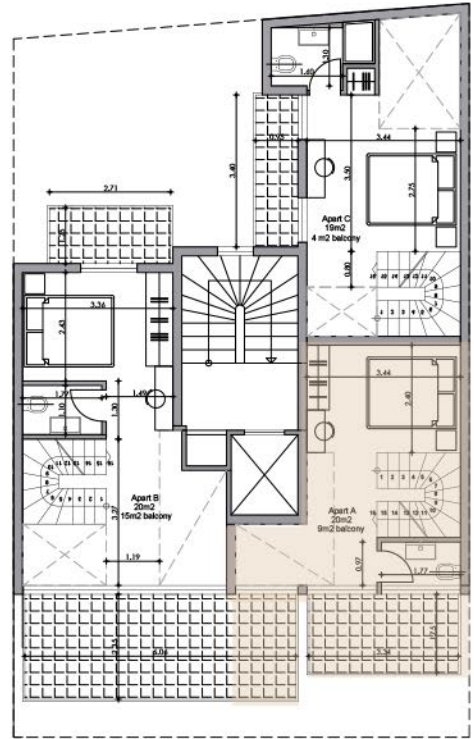


Area

49 m² + 18 m² Balcony



-

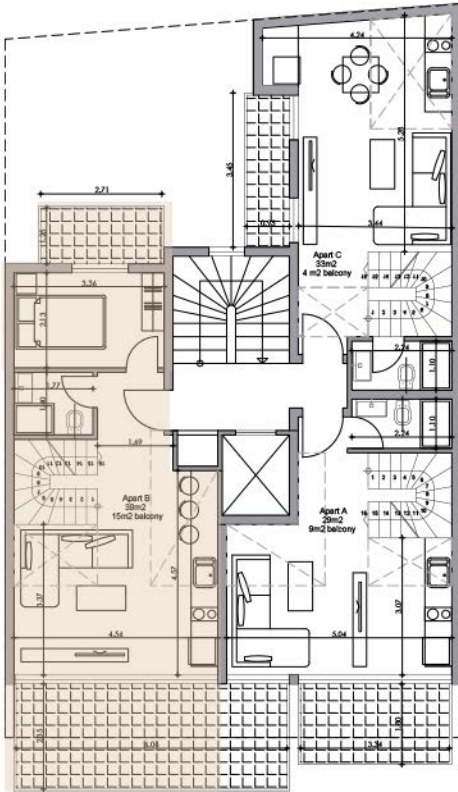


6th Floor-Loft A

20 m² + 9 m² Balcony

Loft A

* Floor plans depicted in this brochure are preliminary and subject to variation. Final floor plans, along with accurate dimensions, will be issued following the completion of necessary permitting processes.



5th Floor-Loft B

39 m² + 15 m² Balcony



Type
2 Bedrooms



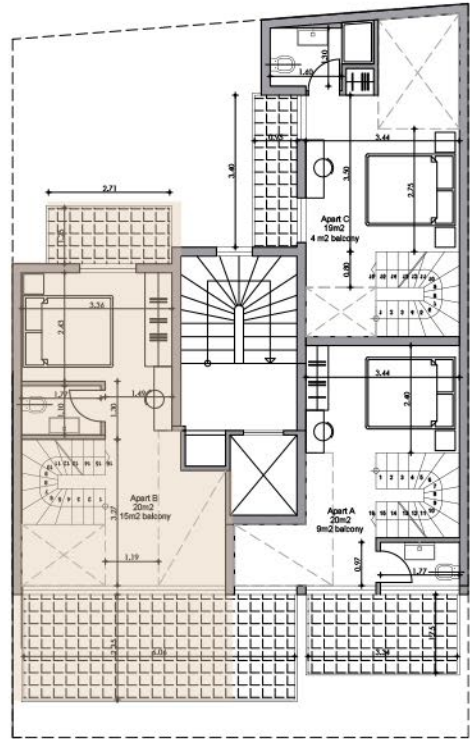
Level
Fifth Sixth Floor



Area
59 m² + 30 m² Balcony



-

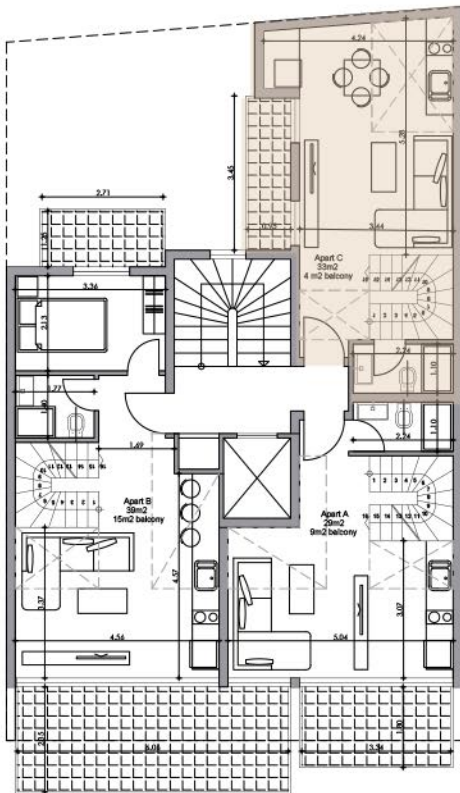


6th Floor-Loft B

20 m² + 15 m² Balcony

Loft B

* Floor plans depicted in this brochure are preliminary and subject to variation. Final floor plans, along with accurate dimensions, will be issued following the completion of necessary permitting processes.



5th Floor-Loft C

33 m² + 4 m² Balcony



Type

1 Bedroom



Level

Fifth Sixth Floor

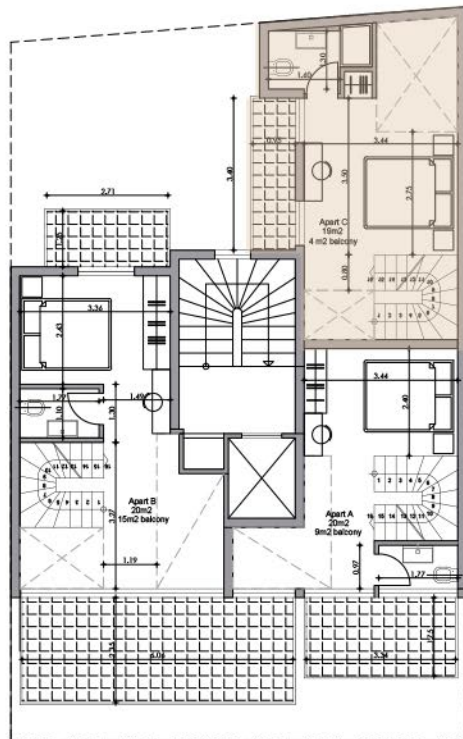


Area

52 m² + 8 m² Balcony



-



6th Floor-Loft C

19 m² + 4 m² Balcony

Loft C

* Floor plans depicted in this brochure are preliminary and subject to variation. Final floor plans, along with accurate dimensions, will be issued following the completion of necessary permitting processes.

OUR OFFICES

GRC

Greece
+30 698 204 3755

LBN

Lebanon
+961 76 78 78 70

UAE

United Arab Emirates
+971 5888 19374

IRQ

Iraq
+964 770 977 6767

UK

United Kingdom
+44 7990 816230

KWT

Kuwait
+965 9945 5787

NGA

Nigeria
+234 906 000 8306

AUS

Australia
+61 421 012 345

KSA

Saudi Arabia
+966 54 688 8222



Go Greece Real Estate



GoGreece_RealEstate



www.gogreecerealestate.com