

GO GREECE

DEVELOPMENT & INVESTMENTS

WELCOME TO THE WORLD OF GO GREECE

DESIGN DEVELOP DELIVER

DAVAKI

K3

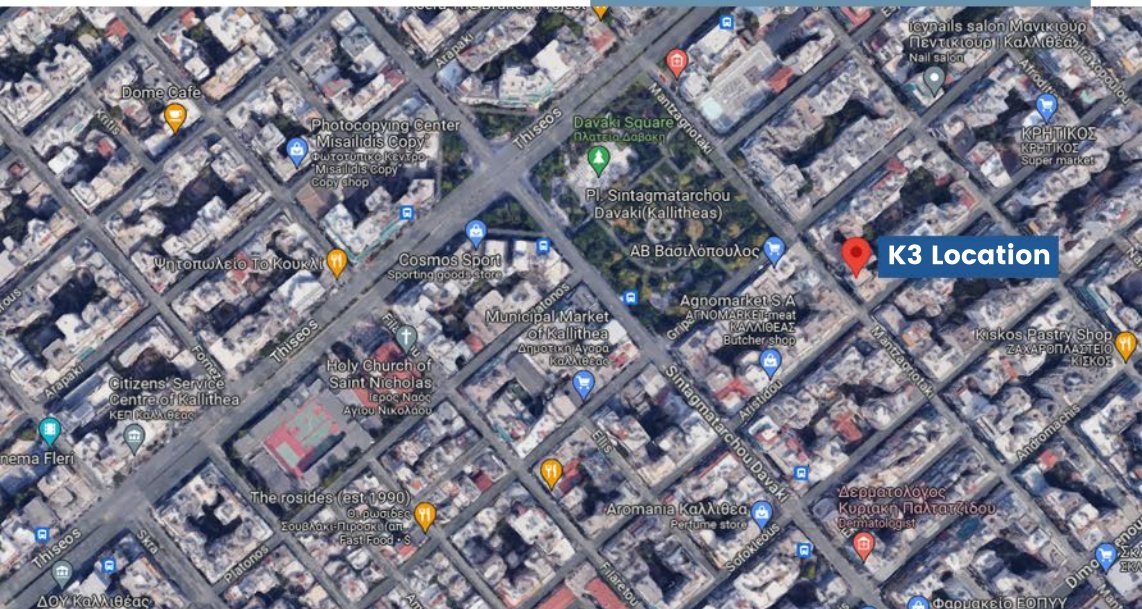


GO GREECE
Development & Investments



THE PROJECT

◆ KALITHEA



K3



Sizes

1 Bedroom

1st-B 2nd-B 3rd-B

2 Bedrooms

1st-A 2nd-A 3rd-A

Lofts

Loft-B Loft-A



Location

Mantzangriotaki 50
Athens, GREECE



Category

Renovation



Availability

8 Apartments

A photograph of a modern building facade. The upper part shows two balconies with white frames and glass railings, featuring indoor plants. The middle section has large windows with light-colored curtains. The lower part shows a white wall with a horizontal window and a planter box containing various green plants and a small tree. A gravel path runs along the base of the building. The image is framed by a blue vertical bar on the right and a white vertical bar on the left.

PERSPECTIVES



A modern living room interior featuring a large, olive-green sectional sofa. A striped blanket is draped over the left side of the sofa. In the foreground, a round wooden coffee table with dark legs sits on a patterned rug. The background wall is white and adorned with three framed abstract artworks. To the right, a window is covered with vertical blinds. The overall aesthetic is contemporary and minimalist.

LIFESTYLE



AREA PERKS



Location

Kallithea is situated approximately 5 kilometers southwest of the city center of Athens, making it easily accessible and well-connected to other parts of the city.

Amenities and Services

Kallithea offers a wide range of amenities and services to its residents and visitors. The area is home to several supermarkets, shops, restaurants, cafes, and entertainment venues, providing ample options for shopping, dining, and leisure activities.

Parks and Recreation

Kallithea boasts several parks and green spaces where residents can enjoy outdoor activities and relaxation. The most notable park in the area is Alsos Kallitheas, a large park with lush greenery, walking paths, and recreational facilities.

Cultural Heritage

Kallithea is known for its cultural heritage and historical landmarks. The most prominent landmark is the Kallithea Town Hall, an impressive building that showcases neoclassical architecture and serves as a symbol of the area's history.

Transportation

Kallithea is well-served by public transportation, including buses and metro stations. These transportation options provide convenient access to other parts of Athens, allowing residents to easily commute or explore the city.



Hospitals

Kallithea is in close proximity to several hospitals and medical centers. Some notable hospitals in the area include:

Metropolitan Hospital - Located in nearby Piraeus, it is approximately 10 minutes away by car.
Athens Medical Center - Situated in Marousi, it is around a 25-minute drive from Kallithea.

Pharmacies

There are numerous pharmacies scattered throughout Kallithea, offering easy access to medications and healthcare products. These pharmacies can be found within residential areas and near commercial districts. Locals and visitors can easily locate a nearby pharmacy to fulfill their healthcare needs.

Parking Spaces

Kallithea provides various parking options for residents and visitors. There are on-street parking spaces available throughout the municipality, as well as public parking lots and garages. Additionally, commercial establishments such as shopping centers and entertainment venues often have their own parking facilities.



A photograph of a modern building facade. The building features a mix of materials: light grey stone tiles, dark wood slats, and white concrete. It has multiple levels with balconies and large windows. Some balconies have glass railings, while others have greenery. A large, dark green tree is on the right side of the image. The sky is blue with some clouds. A blue banner with white text is overlaid on the left side of the image.

FLOOR PLANS



Type
2 Bedrooms



Level
First Floor



Area
70 m²



-

1st-A



Type
1 Bedroom



Level
First Floor



Area
44 m² + 10 m² Balcony



-

1st-B



Type
2 Bedrooms



Level
Second Floor



Area
70 m²



-

2nd-A



Type
1 Bedroom

Level
Second Floor

Area
44 m² + 10 m² Balcony

100%



Type
2 Bedrooms



Level
Third Floor



Area
70 m²



-

3rd-A



Type
1 Bedroom



Level
Third Floor

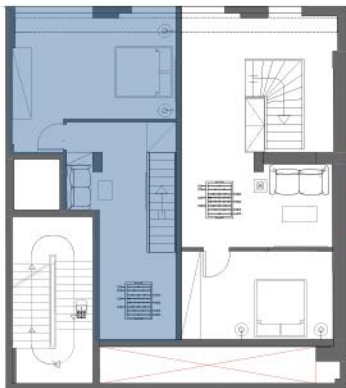


Area
44 m² + 10 m² Balcony



-

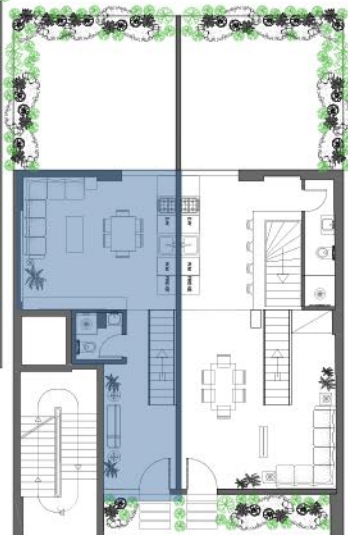
3rd-B



Loft-A BS
37 m²



Loft-A GF
38 m² + 25 m² Backyard



Loft-A Mezzanine
22 m²



Type
Loft



Level
BS - GF - Mezzanine

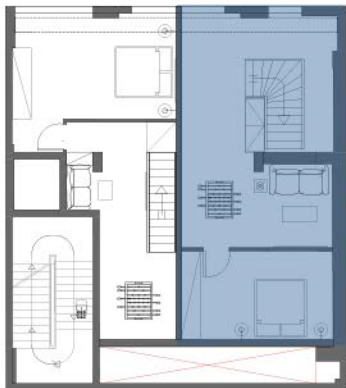


Area
122 m² Total Area



-

Loft-A



Loft-B BS
43 m²



Loft-B GF
52 m² + 25 m² Backyard



Loft-B Mezzanine
25 m²



Type
Loft



Level
BS - GF - Mezzanine



Area
145 m² Total Area



-

Loft-B

OUR OFFICES



GRC	Greece +30 698 204 3755
LBN	Lebanon +961 76 78 78 70
UAE	United Arab Emirates +971 5888 19374
IRQ	Iraq +964 770 977 6767
UK	United Kingdom +44 7990 816230
KWT	Kuwait +965 9945 5787
NGA	Nigeria +234 906 000 8306
AUS	Australia +61 421 012 345
KSA	Saudi Arabia +966 54 688 8222

-  Go Greece Real Estate
-  GoGreece_RealEstate
-  www.gogreecerealestate.com