

# GO GREECE

DEVELOPMENT & INVESTMENTS

## K View



GO GREECE  
Development & Investments

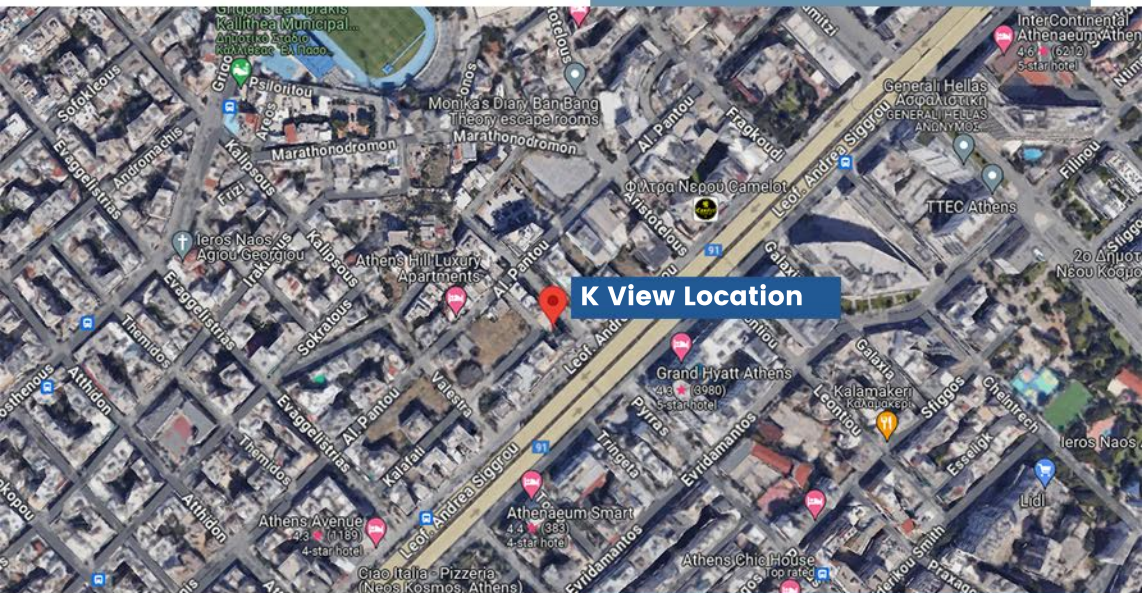
WELCOME TO THE WORLD OF **GO GREECE**

DESIGN DEVELOP DELIVER



# THE PROJECT

◆ KALITHEA



## K View Location



# K View



## Sizes

### 1 Bedroom

01 C1 C2 D1 D2

### Lofts

Loft-A1 Loft-A2 Loft-B1

Loft-B2 Loft-E1



## Location

Plithonos Gemistou 3,  
Kallithea GREECE



## Category

New Construction



## Availability

10 Apartments



# PERSPECTIVES



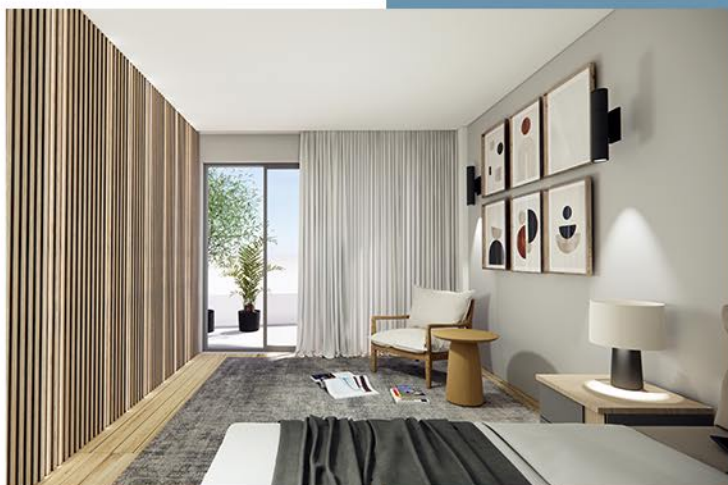




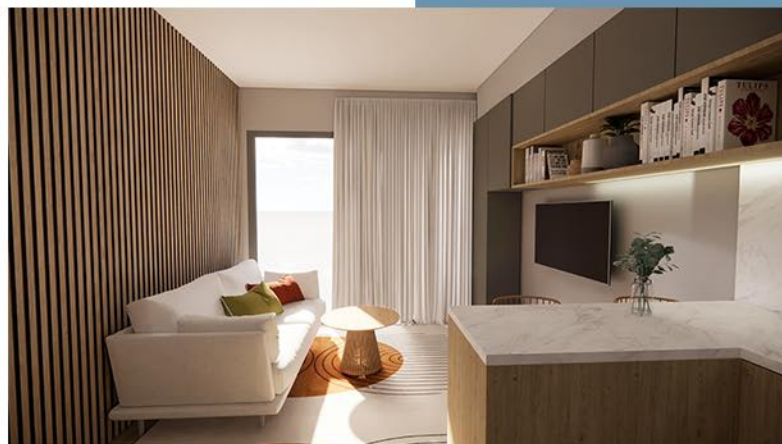
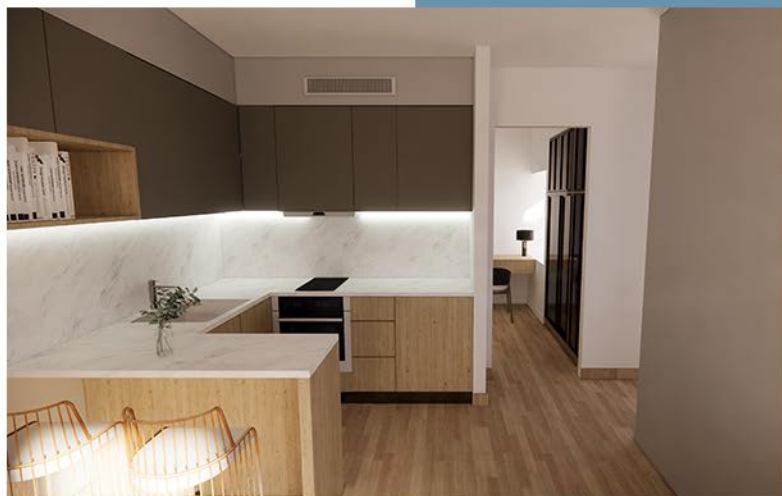


# LIFESTYLE









The image is a vertical photograph of a narrow, historic street in a Mediterranean town. The street is paved with large, irregular stone tiles. On the left, there are yellow buildings with shops and a mural. On the right, there are more yellow buildings with windows and a black lantern. In the background, a hill with a white building is visible under a clear sky. A blue banner with the text "AREA PERKS" is overlaid on the left side of the image.

# AREA PERKS

### Location

Kallithea is situated approximately 5 kilometers southwest of the city center of Athens, making it easily accessible and well-connected to other parts of the city.

### Amenities and Services

Kallithea offers a wide range of amenities and services to its residents and visitors. The area is home to several supermarkets, shops, restaurants, cafes, and entertainment venues, providing ample options for shopping, dining, and leisure activities.

### Parks and Recreation

Kallithea boasts several parks and green spaces where residents can enjoy outdoor activities and relaxation. The most notable park in the area is Alsos Kallitheas, a large park with lush greenery, walking paths, and recreational facilities.

### Cultural Heritage

Kallithea is known for its cultural heritage and historical landmarks. The most prominent landmark is the Kallithea Town Hall, an impressive building that showcases neoclassical architecture and serves as a symbol of the area's history.

### Transportation

Kallithea is well-served by public transportation, including buses and metro stations. These transportation options provide convenient access to other parts of Athens, allowing residents to easily commute or explore the city.





## Hospitals

Kallithea is in close proximity to several hospitals and medical centers. Some notable hospitals in the area include:

**Metropolitan Hospital** - Located in nearby Piraeus, it is approximately 10 minutes away by car.  
**Athens Medical Center** - Situated in Marousi, it is around a 25-minute drive from Kallithea.

## Pharmacies

There are numerous pharmacies scattered throughout Kallithea, offering easy access to medications and healthcare products. These pharmacies can be found within residential areas and near commercial districts. Locals and visitors can easily locate a nearby pharmacy to fulfill their healthcare needs.

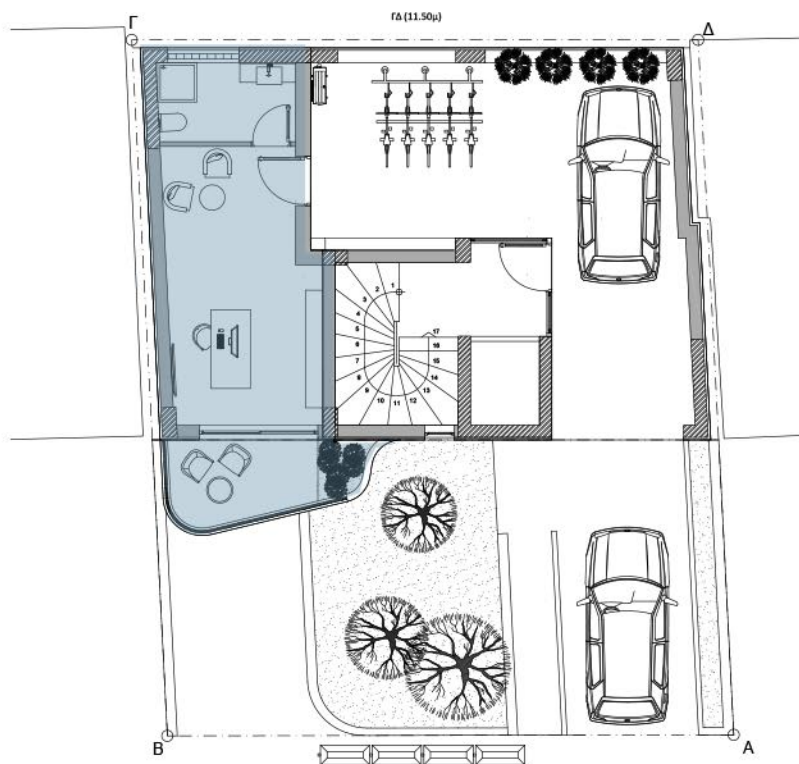
## Parking Spaces

Kallithea provides various parking options for residents and visitors. There are on-street parking spaces available throughout the municipality, as well as public parking lots and garages. Additionally, commercial establishments such as shopping centers and entertainment venues often have their own parking facilities.



# FLOOR PLANS





## Type

Office

## Level

Ground Floor

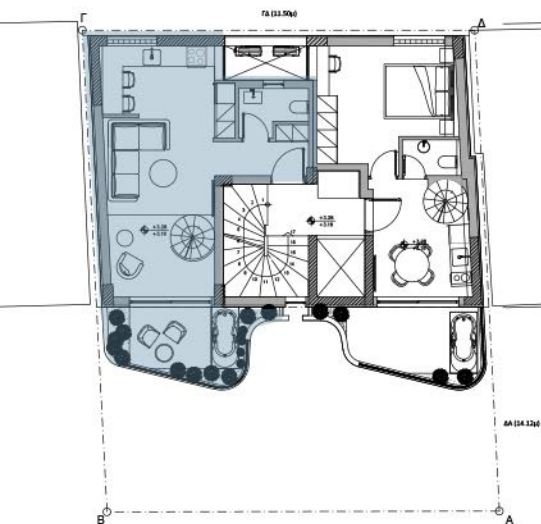
## Area

28 m<sup>2</sup> + 6 m<sup>2</sup> Balcony

-

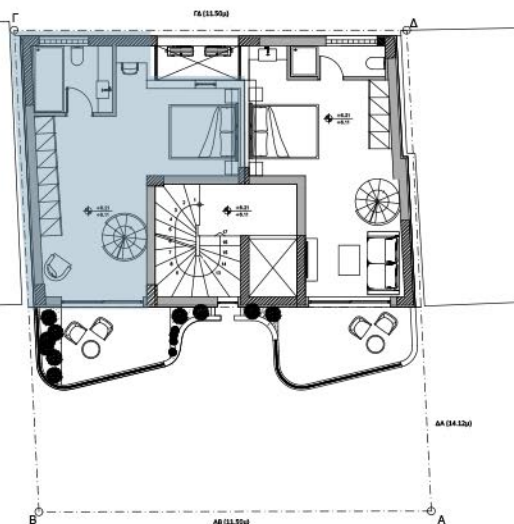
GF-O





### 1st Floor-A1

36 m<sup>2</sup> + 9 m<sup>2</sup> Balcony



### 2nd Floor-A1

36 m<sup>2</sup> + 9 m<sup>2</sup> Balcony

### Type

Loft-2 Bedrooms

### Level

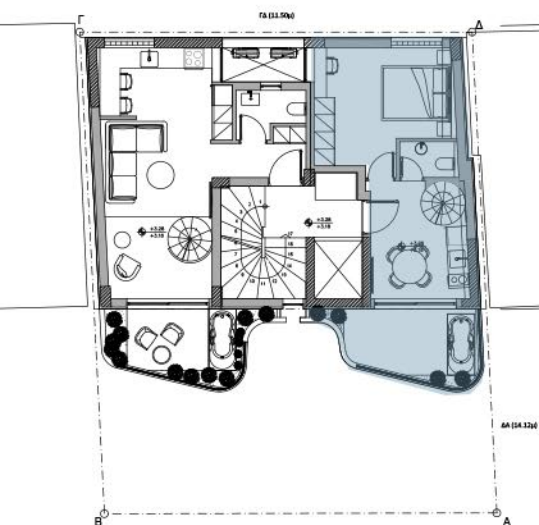
First & Second Floor

### Area

75 m<sup>2</sup> + 18 m<sup>2</sup> Balcony

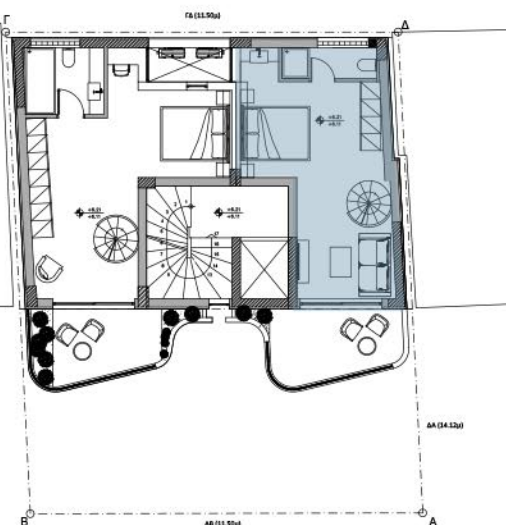
-

1st-A1



### 1st Floor-A2

32 m<sup>2</sup> + 9 m<sup>2</sup> Balcony



### 2nd Floor-A2

32 m<sup>2</sup> + 9 m<sup>2</sup> Balcony

### Type

Loft-2 Bedrooms

### Level

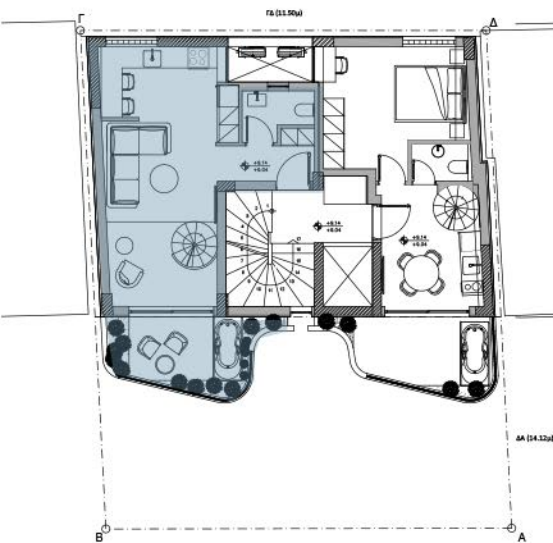
First & Second Floor

### Area

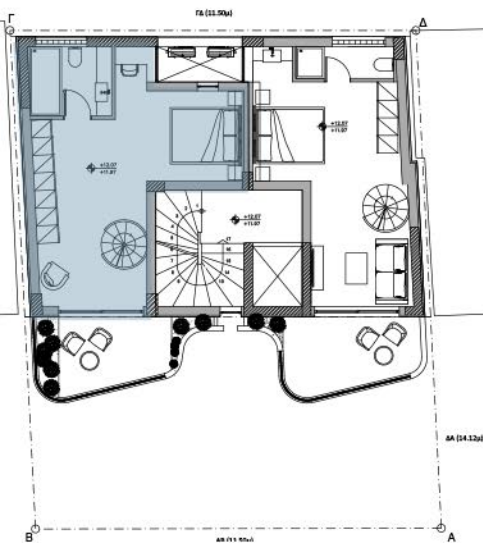
64 m<sup>2</sup> + 18 m<sup>2</sup> Balcony

-

1st-A2



**3rd Floor-B1**  
38 m<sup>2</sup> + 9 m<sup>2</sup> Balcony



**4th Floor-B1**  
38 m<sup>2</sup> + 9 m<sup>2</sup> Balcony

### Type

Loft-2 Bedrooms

### Level

Third & Fourth Floor

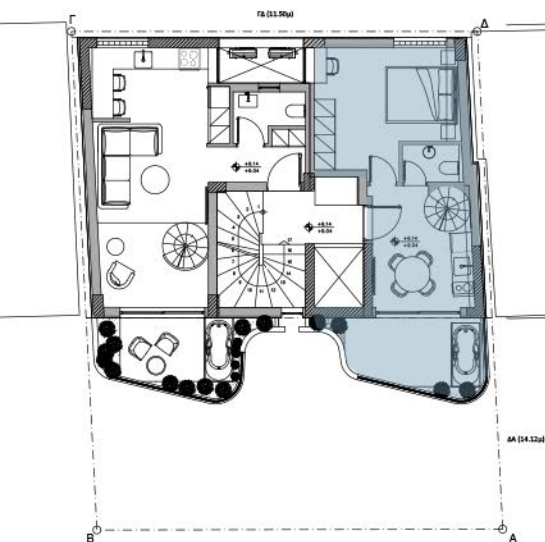
### Area

75 m<sup>2</sup> + 18 m<sup>2</sup> Balcony

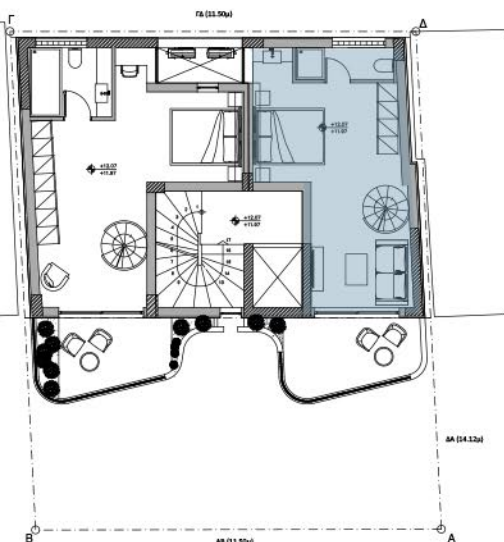
-

**3rd-B1**





**3rd Floor-B2**  
32 m<sup>2</sup> + 9 m<sup>2</sup> Balcony



**4th Floor-B2**  
32 m<sup>2</sup> + 9 m<sup>2</sup> Balcony

## Type

Loft-2 Bedrooms

## Level

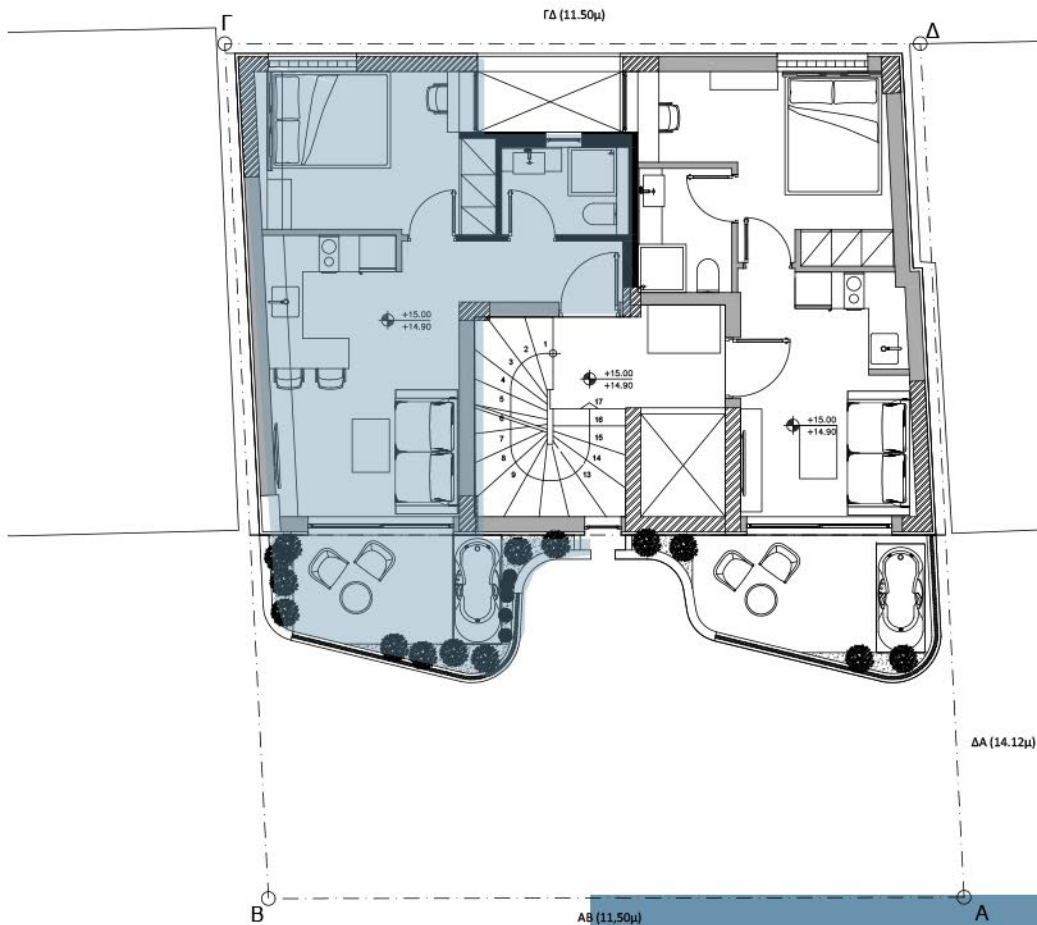
Third & Fourth Floor

## Area

64 m<sup>2</sup> + 18 m<sup>2</sup> Balcony

-

**3rd-B2**



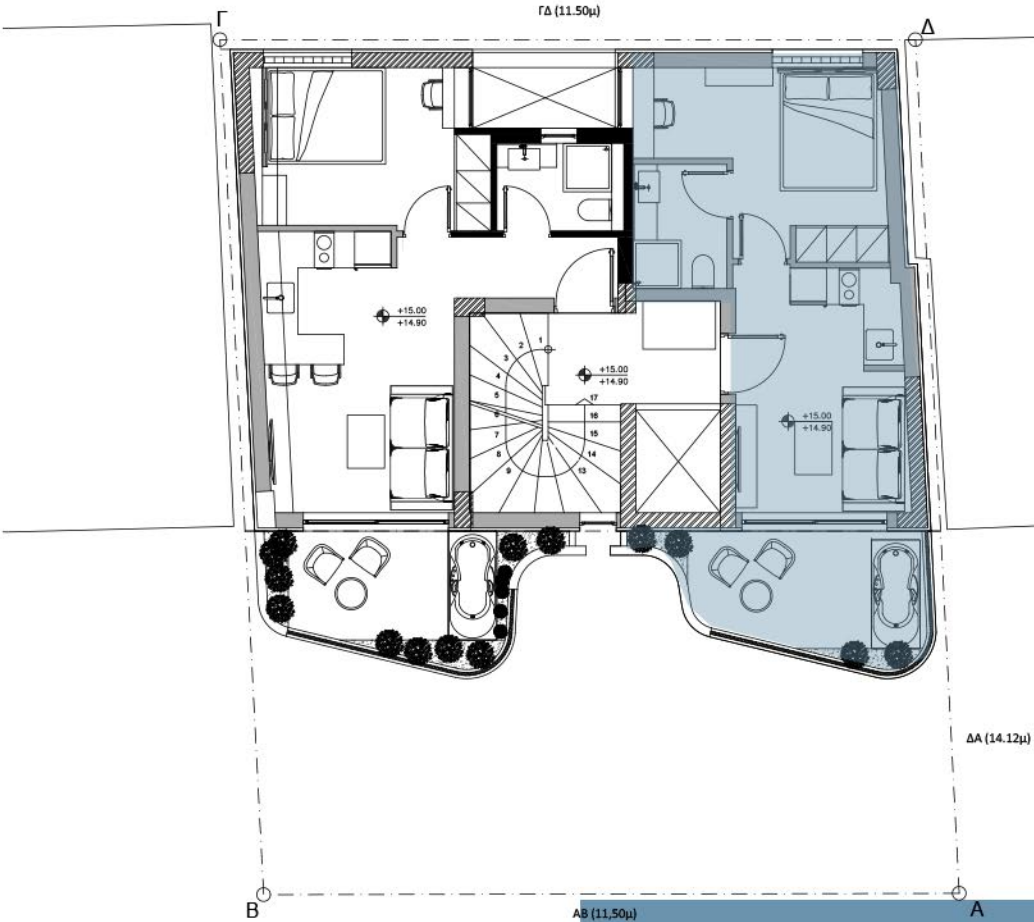
**Type**  
1 Bedroom

**Level**  
Fifth Floor

**Area**  
38 m<sup>2</sup> + 9 m<sup>2</sup> Balcony

-

**5th-C1**



**Type**  
1 Bedroom

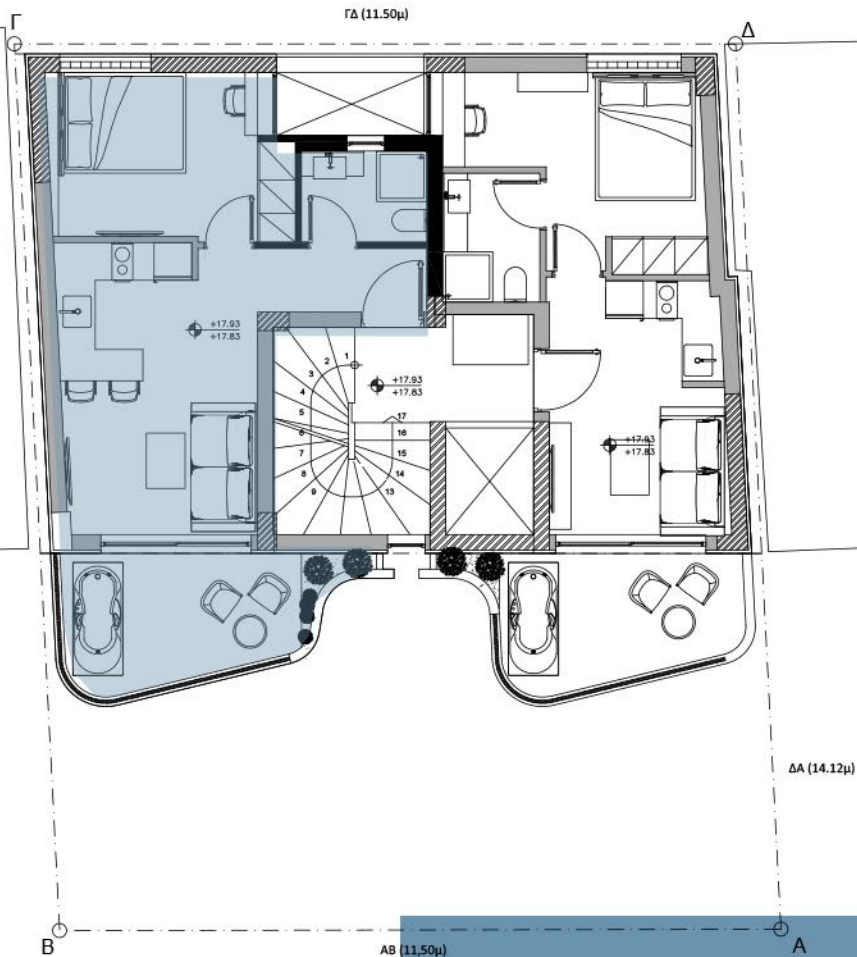
**Level**  
Fifth Floor

**Area**  
32 m<sup>2</sup> + 9 m<sup>2</sup> Balcony

-

**5th-C2**





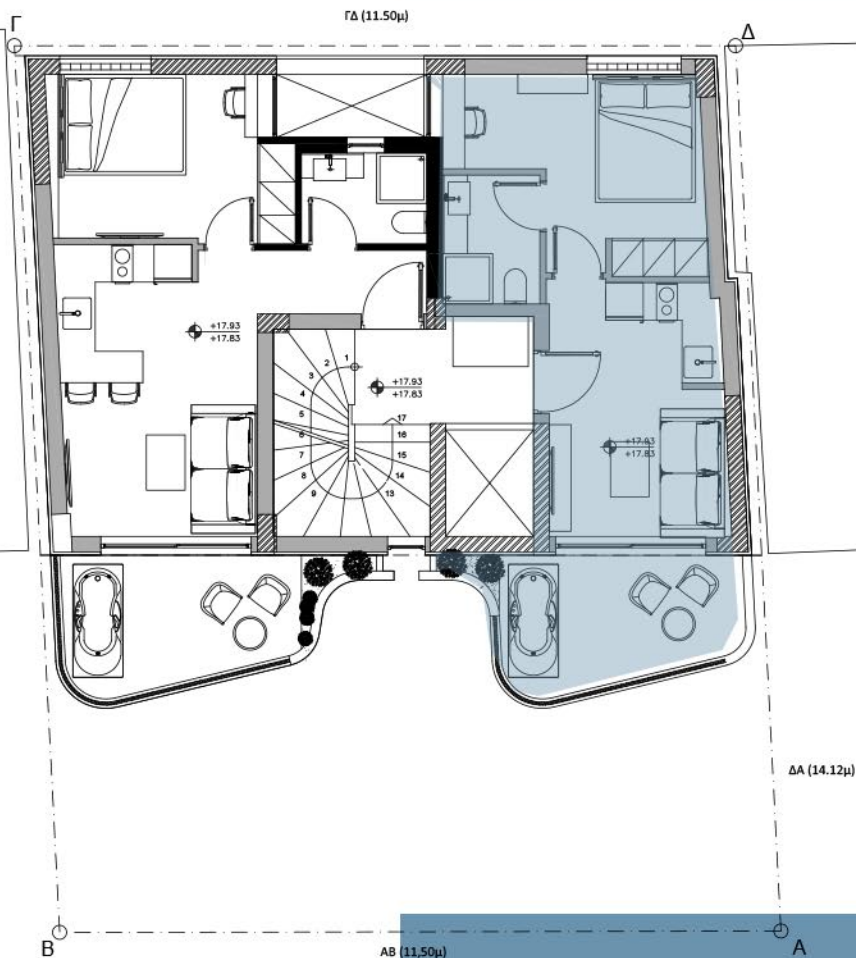
**Type**  
1 Bedroom

**Level**  
Sixth Floor

**Area**  
38 m<sup>2</sup> + 9 m<sup>2</sup> Balcony

-

**6th-D1**



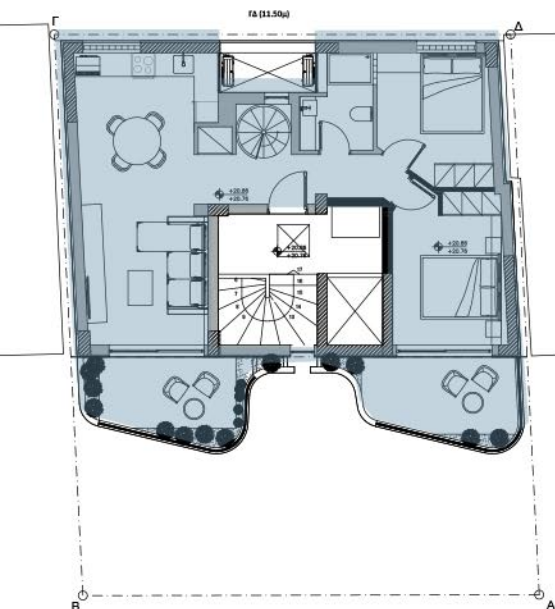
**Type**  
1 Bedroom

**Level**  
Sixth Floor

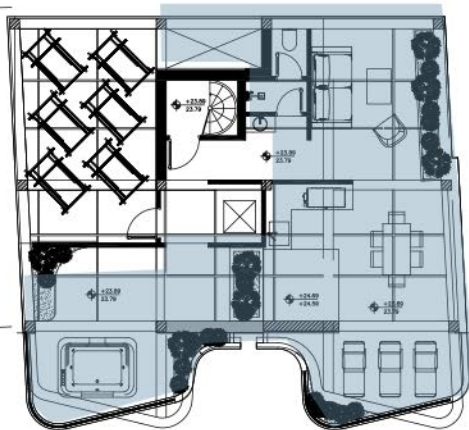
**Area**  
32 m<sup>2</sup> + 9 m<sup>2</sup> Balcony

-

**6th-D2**



7th Floor-E1



Roof-E1

### Type

2 Bedrooms

### Level

Seventh Floor & Roof

### Area

70 m<sup>2</sup> + 20 m<sup>2</sup> Balcony

-

7th-E1

# OUR OFFICES



<b>GRC</b>	Greece +30 698 204 3755
<b>LBN</b>	Lebanon +961 76 78 78 70
<b>UAE</b>	United Arab Emirates +971 5888 19374
<b>IRQ</b>	Iraq +964 770 977 6767
<b>UK</b>	United Kingdom +44 7990 816230
<b>KWT</b>	Kuwait +965 9945 5787
<b>NGA</b>	Nigeria +234 906 000 8306
<b>AUS</b>	Australia +61 421 012 345
<b>KSA</b>	Saudi Arabia +966 54 688 8222

 Go Greece Real Estate  
 GoGreece\_RealEstate  
 [www.gogreecerealestate.com](http://www.gogreecerealestate.com)